



**MODEL DS-1900**

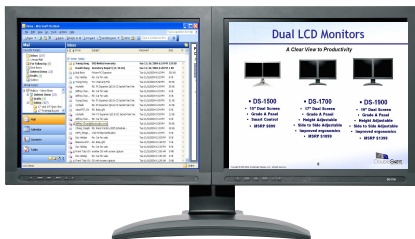
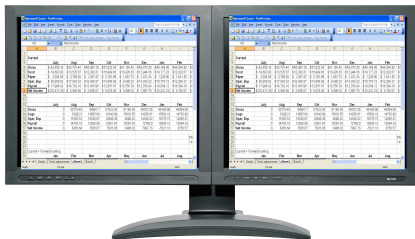


DoubleSight displays as much data as a single 27-30"-inch LCD monitor!

**DoubleSight Dual LCD Display**  
A uniquely designed, multiple LCD display that can increase PC & Mac user productivity up to 50% by managing several sources of information without time-consuming switching between windows!

### Office Productivity

You can expand your spreadsheets across TWO screens or view two separate spreadsheets at the same time!



Open attachments on one screen while reading email on the other!

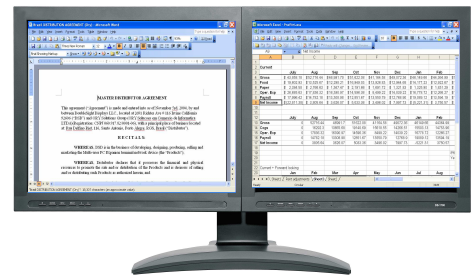
### Stock Trading

Stock traders can view stock quotes and performance charts or manage their portfolios on one screen while simultaneously reading relevant articles or reports live on the other screen !



### Professional Services

Prepare contracts or other legal documents on one screen and view reference material on the second! Easy screen comparisons & uncluttered Windows!



### Graphics Design

Great for image editing and desktop publishing! Use main workspace on one display and toolbars/view on the second screen. See TWO pages at once!



### Easy to Assemble

You can easily assemble our dual display units within minutes. Unlike our competitors, our display unit is very easy to assemble.

# DS-1900 19" Dual LCD Monitor

## Product Specifications



Case Color	Black
Panel Type	Dual 19" TFT-LCD
Viewable Area	29.63in horizontal; 11.85in vertical
Resolution	2560 x 1024 max.
Response Time	8 ms typ. (Tr+Tf)
Colors	16.7M max.
Brightness	300 cd/m <sup>2</sup> typ.
Contrast Ratio	700:1 typ.
Pixel Pitch	0.294mm
Pixel Configuration	R,G,B 2 line vertical stripe pattern
Viewing Angle	-75--+60 horizontal; -75--+75 vertical typ.
Lamp Life	50,000 hours min.
Video Input	Analog 0.7 Vp-p; 75 ohms
Frequency	31-81 KHz horizontal; 56-75Hz vertical
Video Connector	Two 15-pin D-sub type/Two DVI-D type
Power Voltage	Input: AC 100-240V, 50-60Hz; Output: DC+12V, 3.5A max.
Power Consumption	34W max. typ.; 5W, off mode; power management
Operating Conditions	Temperature 0--+40°C (32-104°F); Humidity 80%
User Control	Manual control buttons: POWER, SOURCE, MENU, SELECT, ◀, ▶ On-screen display functions: Select Source, Brightness, Contrast, Color, Position (horizontal/vertical), Image (phase, clock), Misc. Menu (reset, language, OSD position, system info)
Dimensions	34.2in W x 19.1in H x 10.1in D (w/stand)
Weight	33.5lbs (w/ stand)
Tilt/Rotation	5--+20° (tilt); -10°-0 left/ 0-10° right (swivel)
Certification	FCC and UL
Warranty	Three year limited warranty (parts and labor).



For further product and sales inquiries, please contact us:

DoubleSight Displays, LLC  
18 Technology # 161  
Irvine, CA 92618, U.S.A.

Email: [info@doublesight.com](mailto:info@doublesight.com)

TEL: 1-949-253-1535

FAX: 1-949-253-1537

1-877-896-5237 (1-877-TWOLCDS)

[www.doublesight.com](http://www.doublesight.com)